

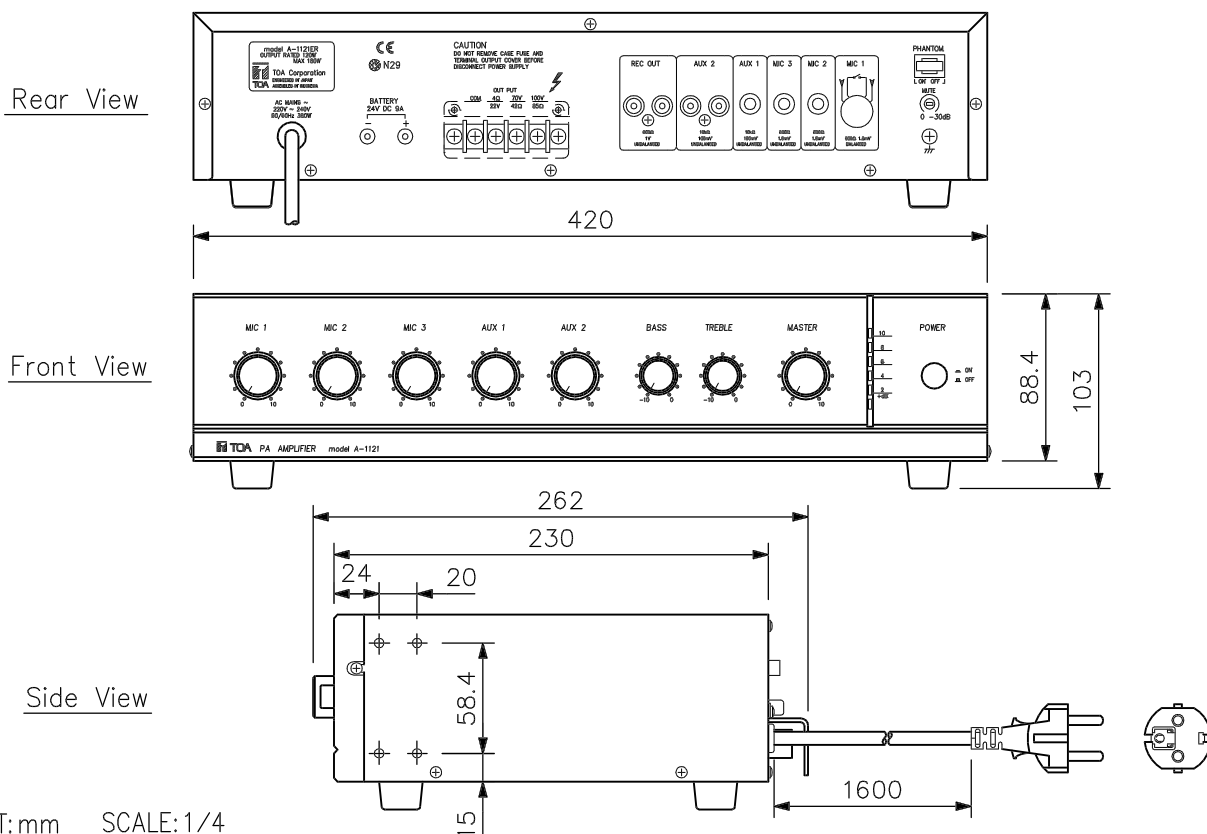
## DESCRIPTION

TOA's Basic PA Amplifiers A-1121 are high cost-performance mixer power amplifiers suited for broadcasting paging or background music in schools, offices, and shops.

## SPECIFICATIONS

Power Requirements	220 - 240 VAC or 24 VDC
Rated Output	120 W (180 W max.)
Power Consumption	380 W (rated output), 9 A (DC operation)
Frequency Response	100 - 10,000 Hz ( $\pm 3$ dB)
Distortion	Less than 1% at 1 kHz, 1/3 rated power
Output Regulation	Less than 3 dB, no load to full load
Tone Control	Over -10 dB at 100 Hz and 10,000 Hz
S/N Ratio	Better than 92 dB (all volume controls: ccw) Better than 75 dB (MASTER volume: cw, all input volume: ccw) Better than 70 dB (MIC 1, 2, 3) and better than 75 dB (AUX 1, 2)
Output	(Speaker) High impedance: 42 $\Omega$ (70 V), 85 $\Omega$ (100 V), balanced Low impedance: 4 $\Omega$ , balanced M4 screw terminal, distance between barriers: 9 mm (Recording output) 0 dBV, 600 $\Omega$ , unbalanced, RCA pin jack (when using both L and R)
Input	(MIC1) -55 dBV (1.8 mV), 600 $\Omega$ , electrically balanced, 5P DIN (MIC2) -55 dBV (1.8 mV), 600 $\Omega$ , unbalanced, phone jack (MIC3) -55 dBV (1.8 mV), 600 $\Omega$ , unbalanced, phone jack (AUX1) -20 dBV (100 mV), 10 k $\Omega$ , unbalanced, phone jack (AUX2) -20 dBV (100 mV), 10 k $\Omega$ , unbalanced, RCA pin jack (when using both L and R)
Phantom power	(MIC1) 21 VDC
Indicators	Power indicator LED, LED output level meter
Protection circuit	Current limiter, thermal protection, AC and DC fuse
Muting function	MIC1 overrides other input signals with 0 - 30 dB attenuation
Finish	Panel: ABS resin, black Case: Steel plate, black, paint
Dimensions	420 (W) $\times$ 103 (H) $\times$ 262 (D) mm
Weight	10 kg

## APPEARANCE



UNIT:mm SCALE:1/4